

SHENNONA PSAP

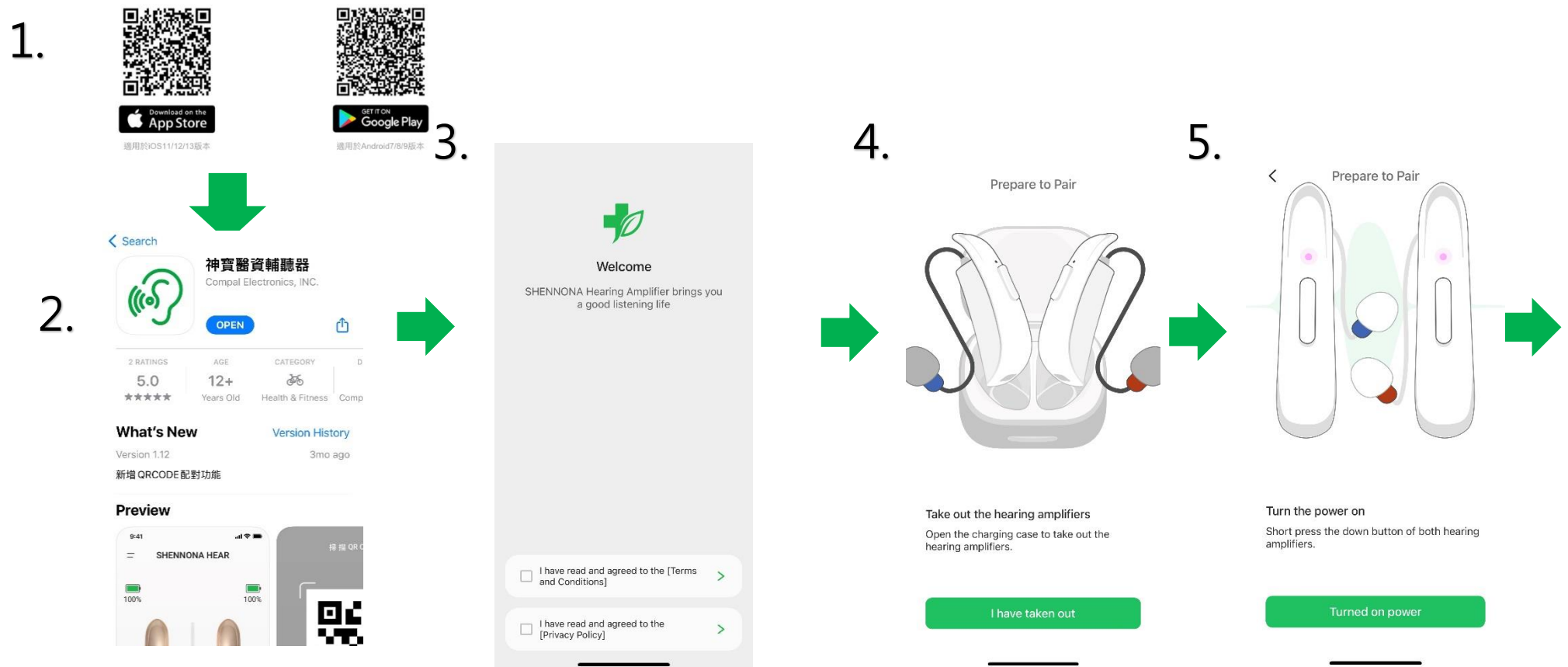
Pairing and AI hearing fitting setting process

- Android APP pairing

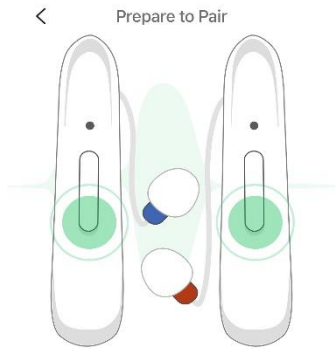
STEP1: Scan QR CODE to download the APP

STEP2: Refer the process to pair the PSAP on mobile Phone.

APP 下載



6.

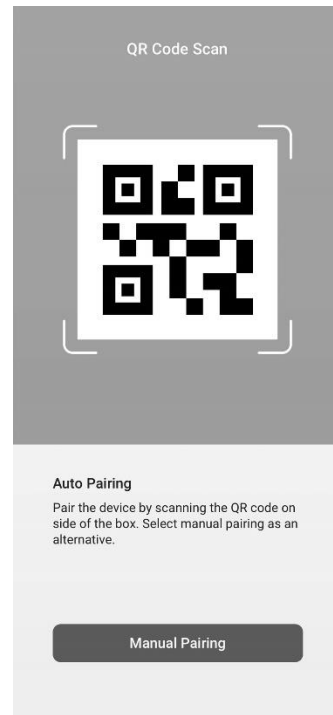


Enable pairing mode

Long press the down button of both hearing amplifier until the indicator flashes blue.

Blue indicator flashing

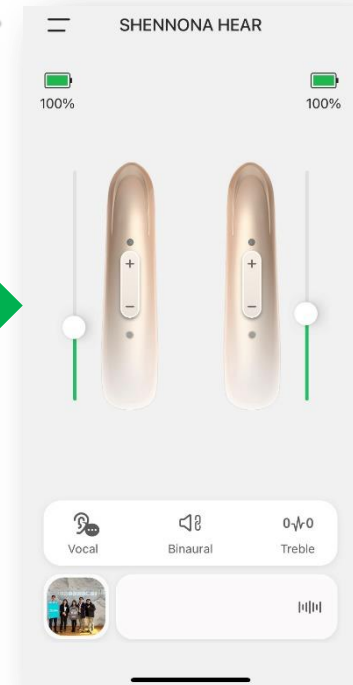
7.



8.



9.

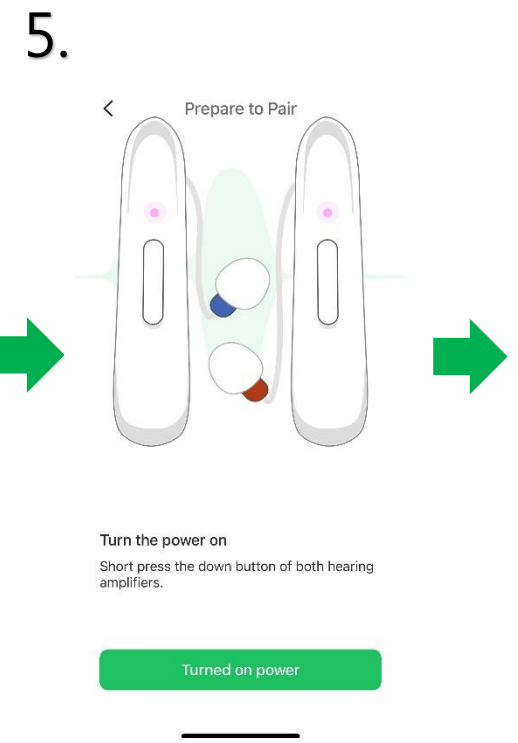
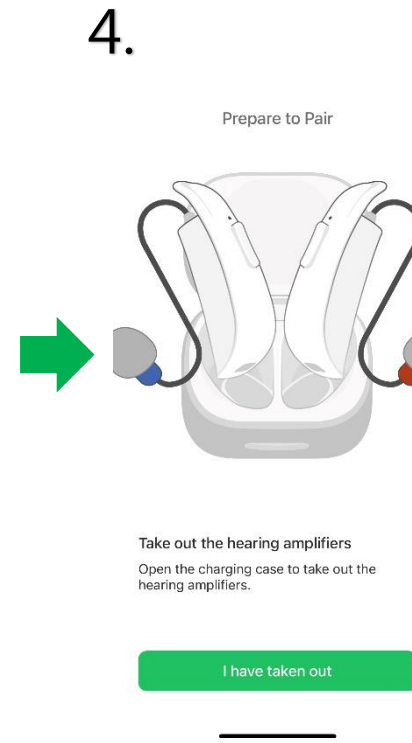
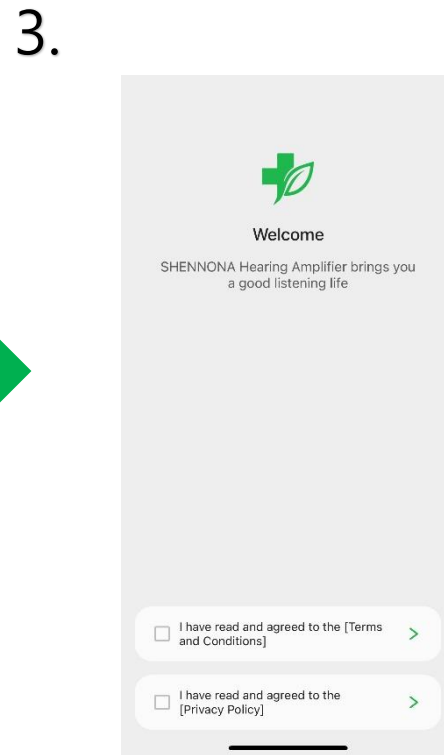
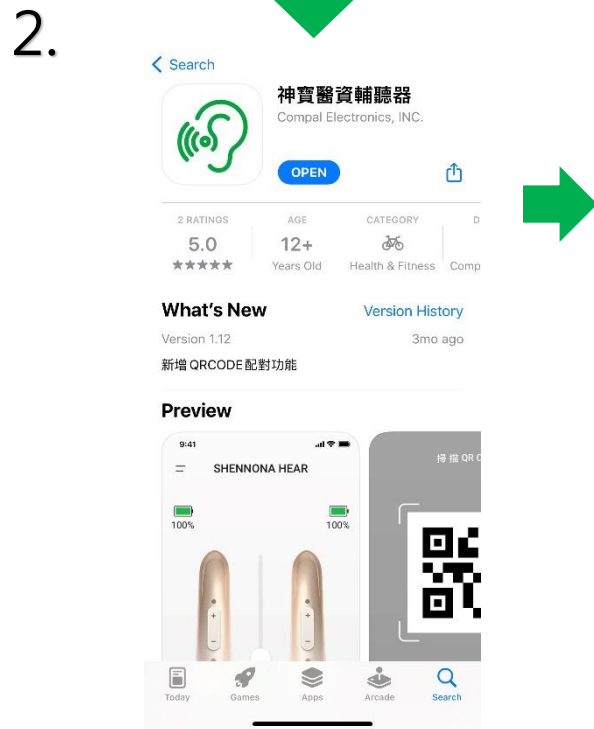


- IOS APP paring process

STEP1: Scan QR CODE to download the APP

STEP2: Refer the process to pair the PSAP on mobile Phone.

1. APP 下載

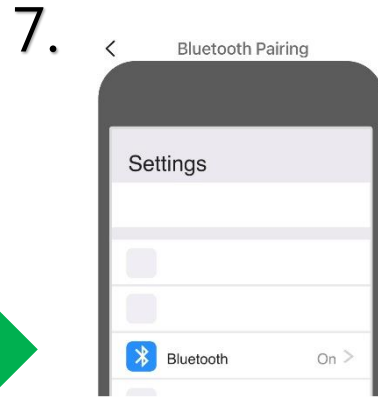




Enable pairing mode

Long press the down button of both hearing amplifier until the indicator flashes blue.

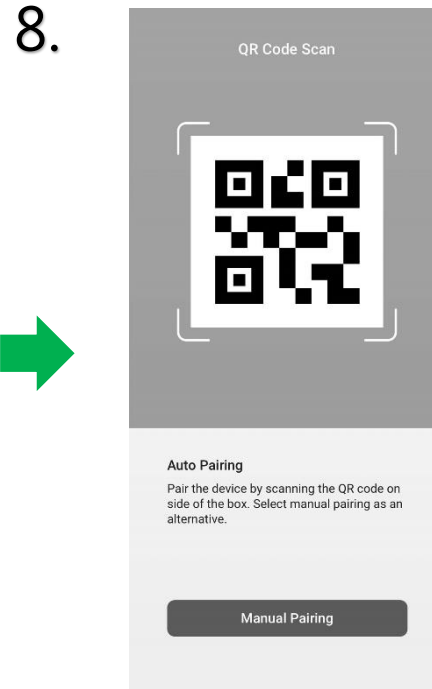
Blue indicator flashing



Go to System Bluetooth Pairing

Follow the instructions for pairing the devices and return to this page when the pairing is complete.

Device paired →



Auto Pairing

Pair the device by scanning the QR code on side of the box. Select manual pairing as an alternative.

Manual Pairing



Device Binding

Device binding

藍牙配對要求

「SL_BLE」想要與您的 iPhone 配對。

取消

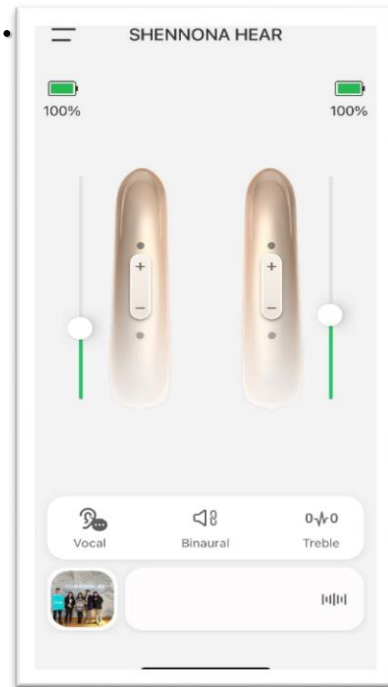
配對



10.



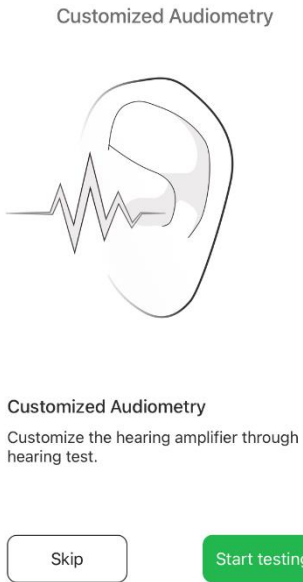
11.



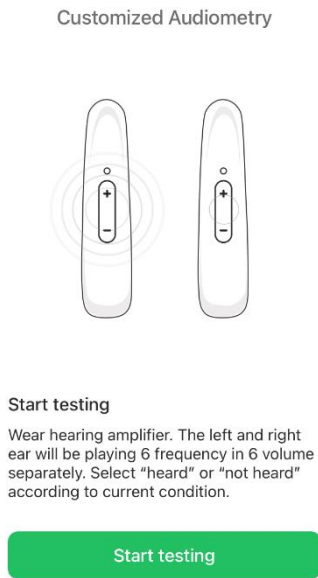
- **First time setting AI hearing fitting.**

- When you open APP first time, APP will operate "Customized Audiometry" . If you would like to use "Customized Audiometry" , please click "Start testing" .
- If you would not like to use "Customized Audiometry" , please click "Skip" .

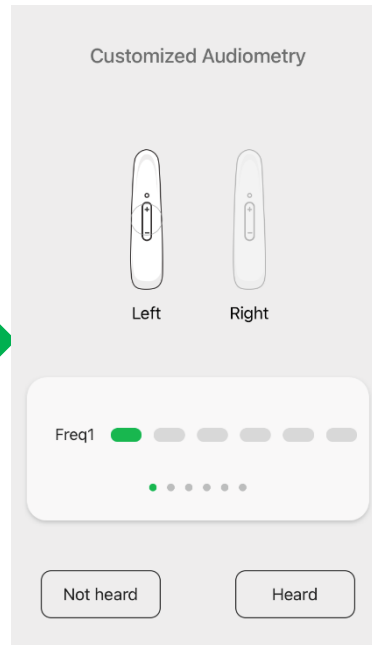
1.



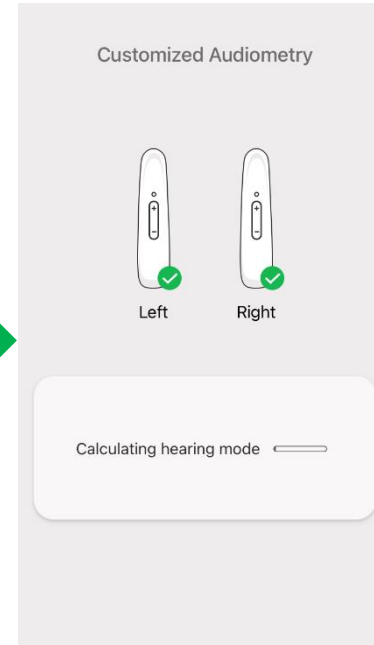
2.



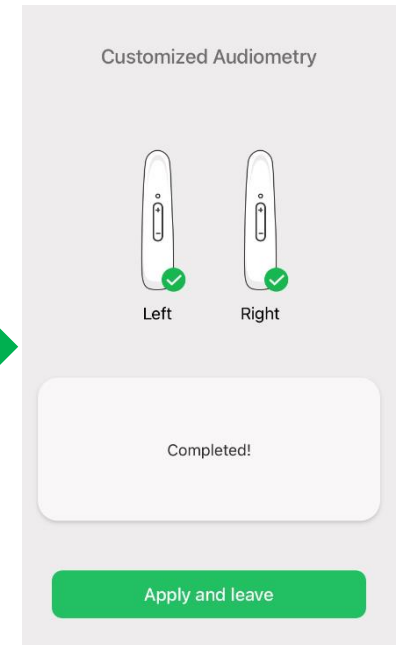
3.



4.

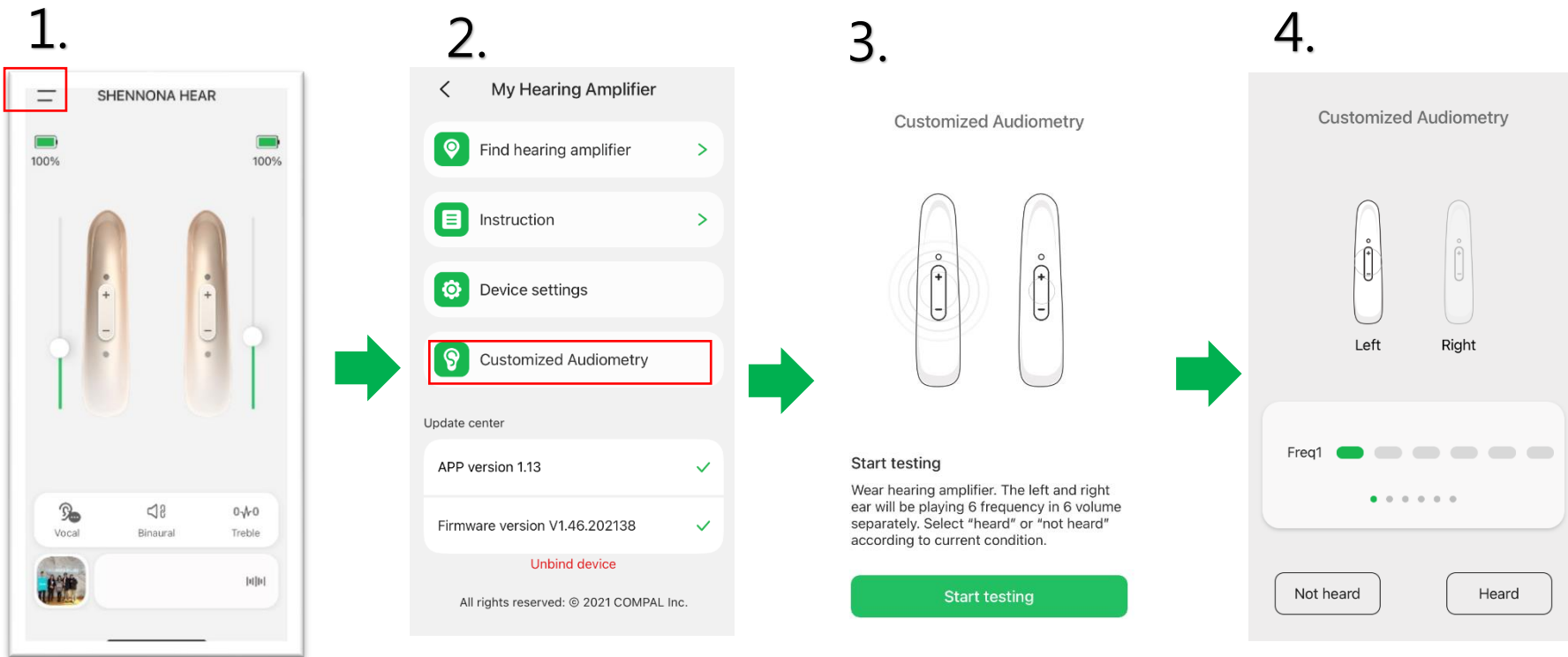


5.



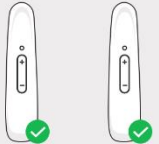
- **Setting AI hearing fitting**

➤ If you would like to use “Customized Audiometry” again. Please refer the setting process as below:




5.

Customized Audiometry




Left Right

Calculating hearing mode 



6.

Customized Audiometry



Left Right

Completed!

[Apply and leave](#)